

Wingrove Primary School

What we are covering this term:

Topics:

This half term our topic is 'What makes us special?' We are celebrating differences and looking at what makes us unique. Next half term our topic is 'Is there magic in the forest?'

Literacy:

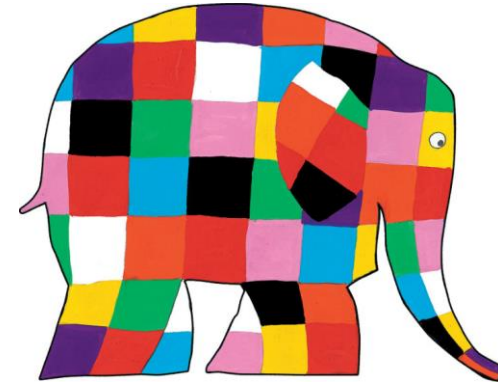
- Ask questions to extend knowledge and understanding
- Composing sentences orally before writing them
- Write a series of sentences with a capital letter, finger space and a full stop
- Read tricky words
- Read words phonetically
- Form letters correctly and sitting letters on the line
- Develop their comprehension of what they have read and predicting what may happen next
- Writing non-chronological reports

Numeracy:

- Reading, writing and ordering numbers to 20
- Addition and subtraction within 20
- Place value with numbers within 50
- Counting in 2, 5 and 10s
- Measuring length and height
- Measuring volume and weight

Science:

- Labelling the human body
- Naming the five senses
- Testing whether materials are waterproof
- Seasonal changes and plant growth
- Classifying animals



Spring Term Year One

Term Dates

6.1.25 – 21.2.25

3.3.25 – 11.4.24

Half-term Holiday

24.2.24 – 28.2.25

Parents' Evenings

18.2.25 and 19.2.25

Welcome to Year 1

The members of our teaching team are:

Phase Leader: Mr Hields

Class Teachers: Mrs Jobson
Miss Fullerton

Support Staff: Mrs Lowes
Mrs Begum
Ms Parveen

Organisation

- Doors open at **8:35am** and close at **8:45am**.
- Late arrivals must report to the office.
- **Lunch time** is from **12:00pm** until **1:00pm**
- **Home time** is at **3:15pm** when children are collected from the classroom.

P.E. and forest school day is **Monday**. Children need to come in wearing their red P.E. t-shirt, black jogging bottoms and a hoody. They also need to wear suitable footwear e.g. trainers. Trainers with velcro are more suitable than laces to help the children be more independent.

Children should not wear jewellery including earrings.

All children need a pair of wellies which are to be kept in school to wear when going to forest school.

Please encourage your child to be independent when dressing and undressing at home to help them when in school.

Help keep up to date with what we are doing in Year One by signing up to your child's Seesaw account and checking it regularly. We will also post important reminders and homework. Any problems logging in, please let us know.

Homework

Children should bring their reading folders into school **every day**. Please ensure their reading book is in the folder so we can read daily and change your child's book. **Please** practise reading with your child a little every day as this will really help them develop their confidence and fluency in reading.

The children have access to **Mathletics** to help support their learning in maths. Please support your child by helping them to log on to this every week to complete their homework. New homework is set each Friday. These tasks link directly into the work we are doing each week in maths. Please see class teachers if you need support with passwords.

Phonics screening

The children will be completing the phonics screening check during June. We hope to arrange a meeting with you in March to provide more information about the screening check.

We will send more details out nearer the time.

If you have any questions or concerns, please do not hesitate to talk to us.