



# Wingrove Primary School Attendance Newsletter Autumn 2020

**Last Academic Year**  
**2<sup>nd</sup> September 2019 – 20<sup>th</sup> March 2020**

**Welcome** to the autumn edition of the attendance newsletter. It is wonderful seeing the children back at school. We feel that now the gates are open from 0835 we have a nice steady flow of children coming into school and it would be great to think this will help reduce the number of children arriving late to school. Even being a few minutes late each day can have an impact on your child's learning and emotional wellbeing. Children start learning as soon as they are in class, so your child is missing out when they arrive late. We continue to work towards our goals regarding attendance and punctuality as we believe this gives children the best education. Our attendance since returning in September is 94.7%.

If you would like to speak to me regarding your child's attendance or absence, I am outside most mornings near the main school doors.

With kind regards

Mrs Prosperini  
Administrative Officer

**Remember** the doors open at **0835**. If you arrive after the buzzer sounds at **0855**, you are late and should report to the office. Get to school on time and be prepared for the day ahead.

Morning nursery doors open at **0835** and afternoon at **1225**.

**HURRY!  
HURRY!  
HURRY!**



## Overall Punctuality

During the last academic year, we recorded **611** lates, which amounts to a total of over **83 hours of lost learning**.

Please ensure your child arrives at school on time.

## **Overall attendance**

Children in primary school are expected to have attendance above 96%.

Our target for the whole school is set by the government and the local authority and we are expected to reach at least 96% this academic year. Last academic year we achieved **95%**.

**We need to work hard to achieve our target this academic year.**

## Phoning to report an absence

Please phone before 0900 on the first morning of your child's absence. You can leave a message on the absence line by dialling 1 when prompted. It is important to state your child's full name, the name of their teacher and the reason for their absence.

Although we strive for good attendance for all children, we understand that everyone can be ill. If your child is too unwell to come to school, then please phone the school on the number below:



**0191 2735466 or  
0191 2735842**

## Illness

All children at some point are ill, which means that they cannot attend school.

If your child has sickness and diarrhoea then they cannot attend school for at least 48 hours. If your child or a family member shows any signs of Coronavirus please contact NHS and take their advice. If your child or a family member tests positive for Coronavirus, please inform the school at your earliest convenience using this email address:

[admin@wingrove.newcastle.sch.uk](mailto:admin@wingrove.newcastle.sch.uk)

## At the end of the school day

Picking your children up on time at the end of the day is just as important as getting them to school on time.

Please remember school finishes at **1515**. Afternoon nursery is **1530**. If, on occasion, you may be late picking up your children, please ring the school office and we can let your child know.



## Holidays and leave of absence in term time

We continue to work with the local authority in relation to issuing fines for holidays taken in term time. This is an increasing problem, we feel our children should not miss out on their education. **Last academic year we had 66 children missing 408 days due to holidays.**

Please look at the school term calendar and plan your time away during school holiday time. **Penalty fines will be enforced accordingly.**

**Please remember to take into account quarantine periods when booking a holiday abroad (these can change daily). Children may miss two weeks of school on their return to the UK.**

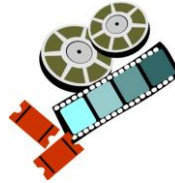


## Film and popcorn afternoons

The children love to try and achieve the best attendance for their class. Every half term, the classes in EYFS/Key Stage 1 and Key Stage 2, with the best attendance, win a film afternoon complete with popcorn. Letters are sent home to the winning classes.



shutterstock • 128432069



We also have **Golden Time** every week for the class who have the fewest lates. The children have a bouncy castle, iPads, table football and a selection of games to play with their classmates.



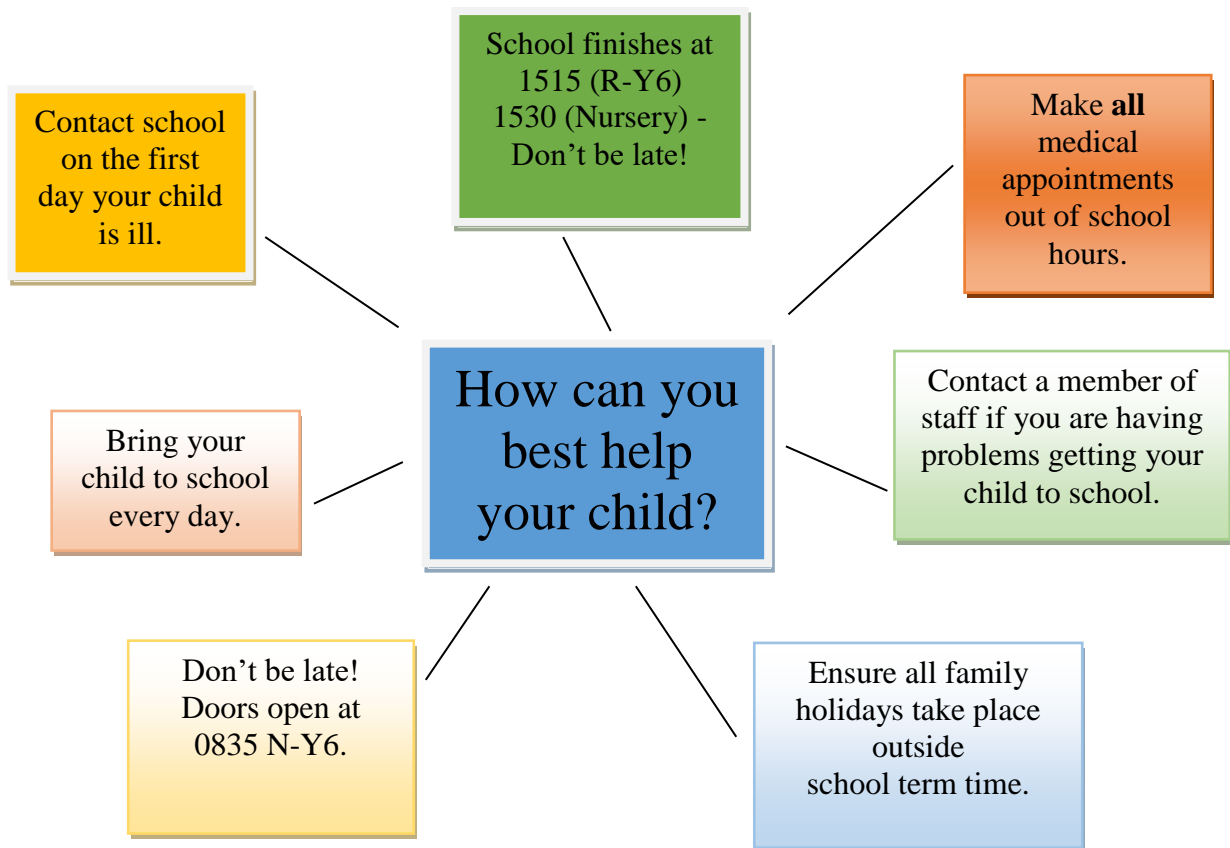
## 100% Attendance Draw



All children who achieve 100% attendance in a half term, and haven't been late, will have their name entered in the prize draw. A name is drawn out in Gold Assembly and the winner is awarded a collection of prizes.



We also have an attendance chart in each classroom, where the children can track their own attendance. The children with 96% or above each half term have their names in a prize draw and the winner is awarded a book.



It is fantastic to be back at school and greeting you all at the beginning and end of each day. The school is again alive with the buzz of happy children. I am so pleased to see that there are fewer children and families arriving at school after 0855 when the second buzzer sounds, which is also really encouraging to see, and is a huge improvement. We open the gates from 0835 now in order to allow everyone to filter in to school and the system is working well.

Obviously, we have to follow the Government guidance at the minute, and so we will send children home during the school day if they are showing one of the three symptoms of Coronavirus: a new, dry, continuous cough; a high temperature or a loss of smell and taste. If this is the case, we will call you and instruct you to take your child for a test. We will give you a leaflet to support you with this. We will also explain that ALL other people who live with you have to isolate for fourteen days, unless the test is negative, in which case everything goes back to normal. In almost every case so far, the tests have been negative, which is excellent. I know it can be a huge disruption to have to pick up children from school for what seems to be very minor symptoms, symptoms we would otherwise monitor before COVID-19. We cannot, however, take that risk, and we need to try and keep the school functioning without the need to send large numbers home.

These are challenging times for all of us, and we must try and do our very best to stop the spread of infection. Because of the increasing numbers in Newcastle, coupled with the fact that we have more people on our premises at the end of the school day, can I please ask you again to wear face coverings when dropping off in the morning, but especially when picking up your children at the end of the day, when we cannot always adhere to two metre distancing at certain exit points. It is brilliant to see that the vast majority of us are wearing coverings and can I encourage everyone to do this in order to protect us all. Please remember to dispose of masks responsibly.

As usual, we are here to help and support and there are now many of us available outside to whom you can talk in the morning and evenings. Thank you for your continued support with this.

Mrs Mullarkey

